



Arab Academy for Science, Technology and Maritime Transport
College of Engineering and Technology
Department of Architecture and Environmental Design

AE 1111 | Architecture Design (1A) | Lecture 11

Site Analysis



DR. MONA SHEDID
*ASSOCIATED PROFESSOR , FACULTY OF ENGINEERING,
BENHA UNIVERSITY*



Lecture 7

1. Introduction

- Site Analysis Concept
- Site Analysis Goals
- Consequence Triangle

2. Context

- Definition
- Kinds of Information

3. Symbolizing Sketch Elements

4. Examples

5. Homework #6



Site Analysis

1

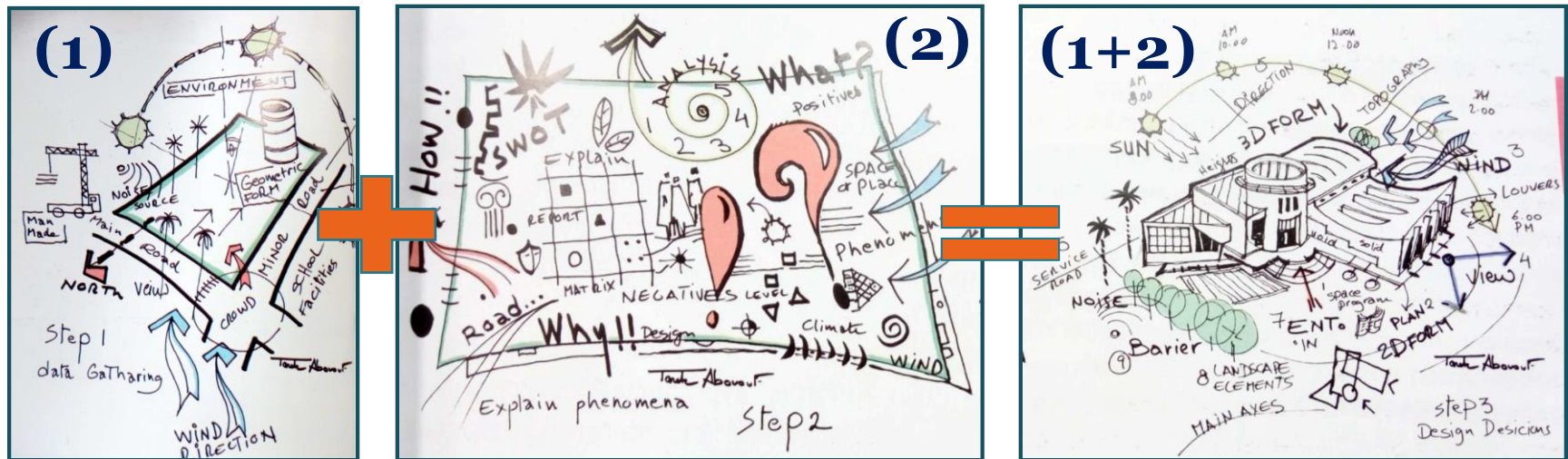


INTRODUCTION

INTRODUCTION

SITE ANALYSIS CONCEPT

Is the process of surveying or studying the existing environment and how it will influence the design and layout on the site.



2

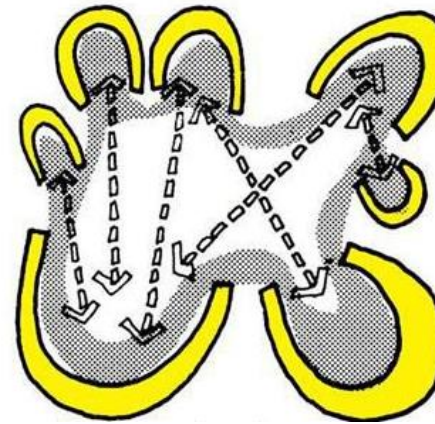


CONTEXT

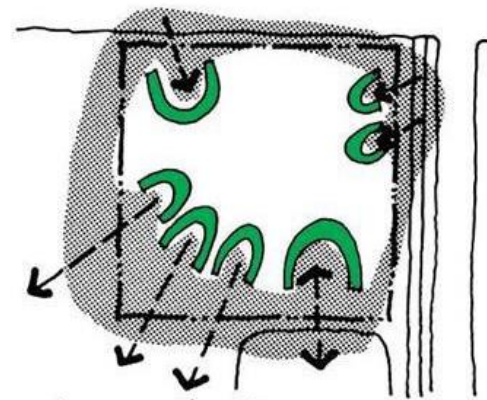
CONTEXT

DEFINITION

The whole situation, background or environment relevant to some event or product. In our case the product is the building.



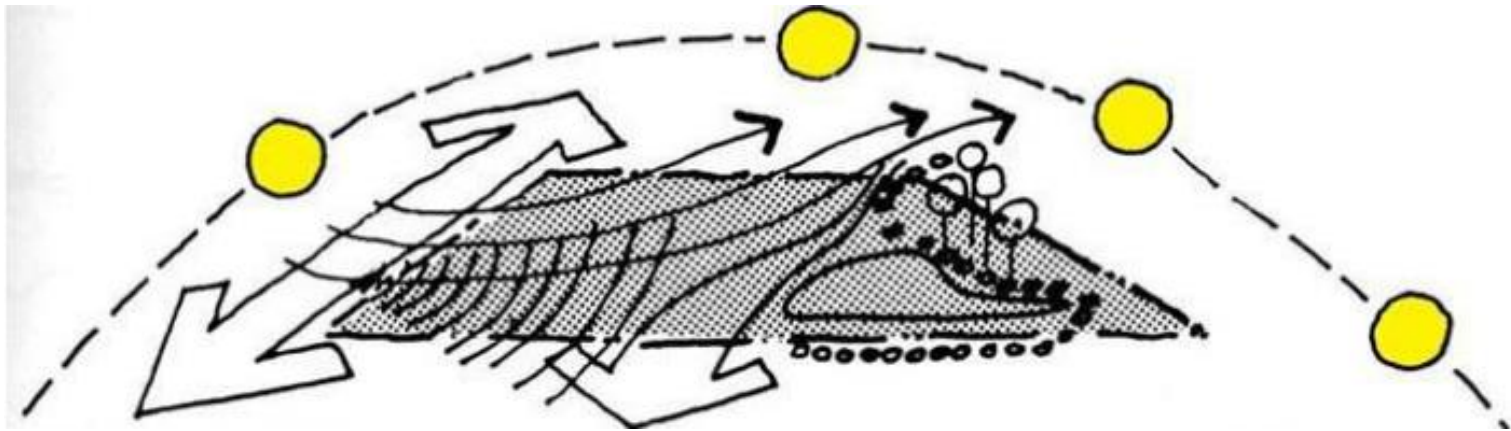
Placement of spaces due to **internal functional relations**



Placement of spaces due to **internal external context**

CONTEXT

KINDS OF INFORMATION



HARD DATA

(relates to physical site data)

- Site Location
- Dimensions
- Contours
- On Site features
- Climate
- Vegetation

SOFT DATA

(relates to human aspects of the site)

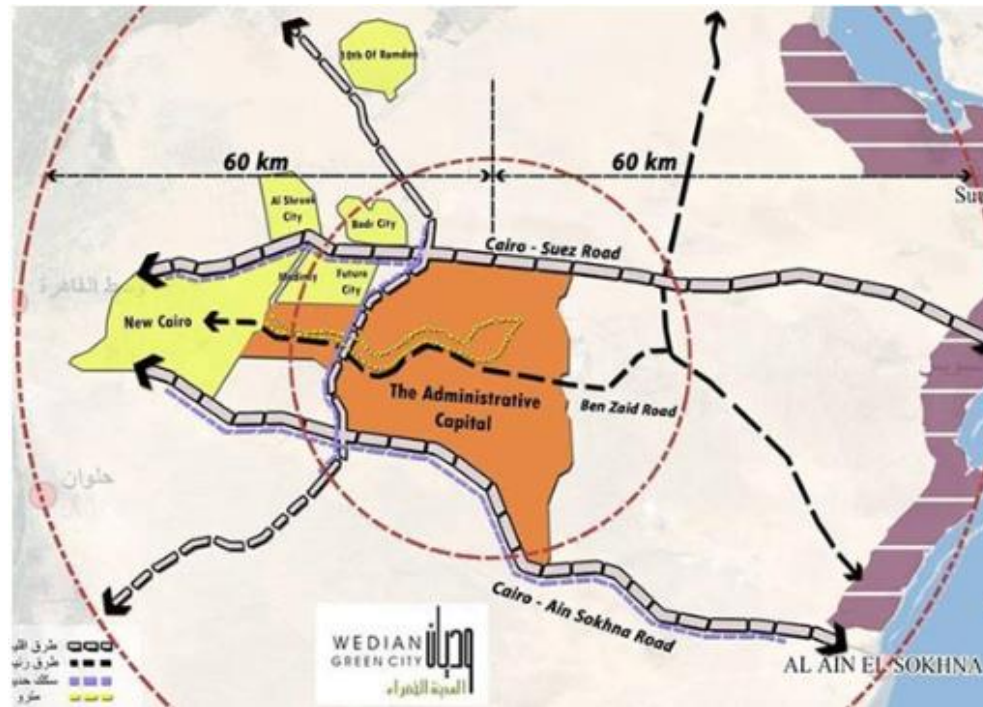
- View from site
- View to site
- Best approaches to the site
- Existence noise
- Existence of human activities
- Type of neighborhood

CONTEXT

KINDS OF INFORMATION

1. LOCATION

Include maps showing location of site in relation to city as a whole

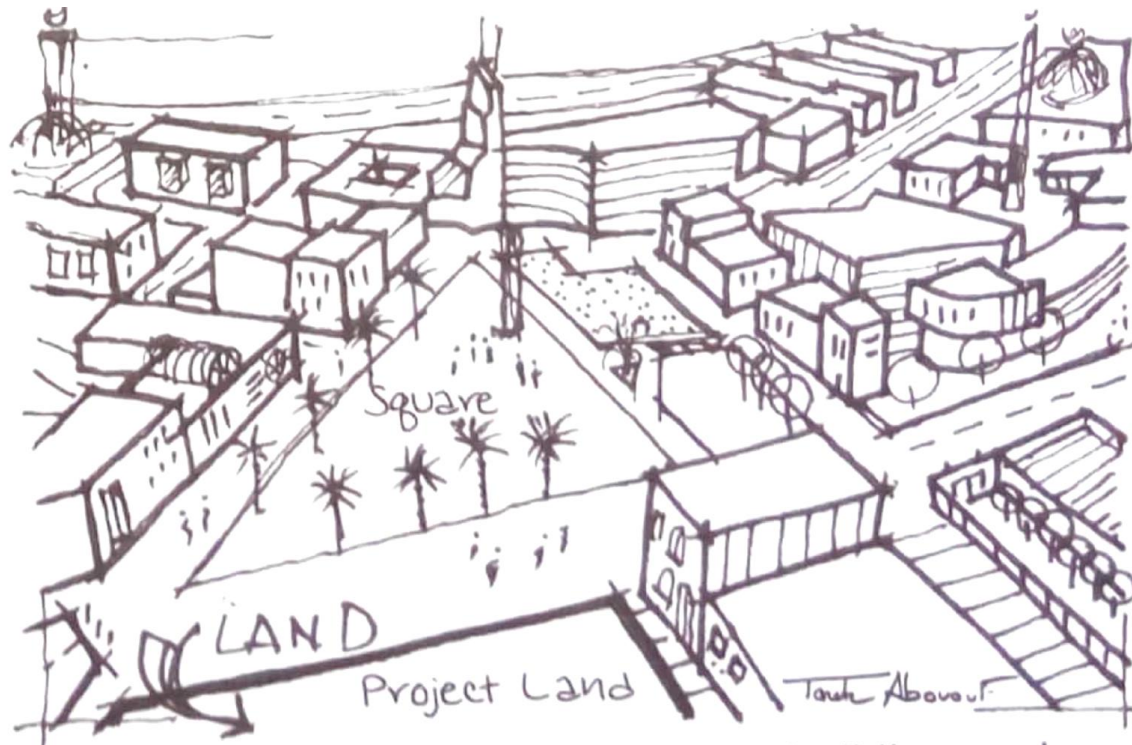


CONTEXT

KINDS OF INFORMATION

2. NEIGHBORHOOD CONTEXT

Presents the immediate surroundings of the site.

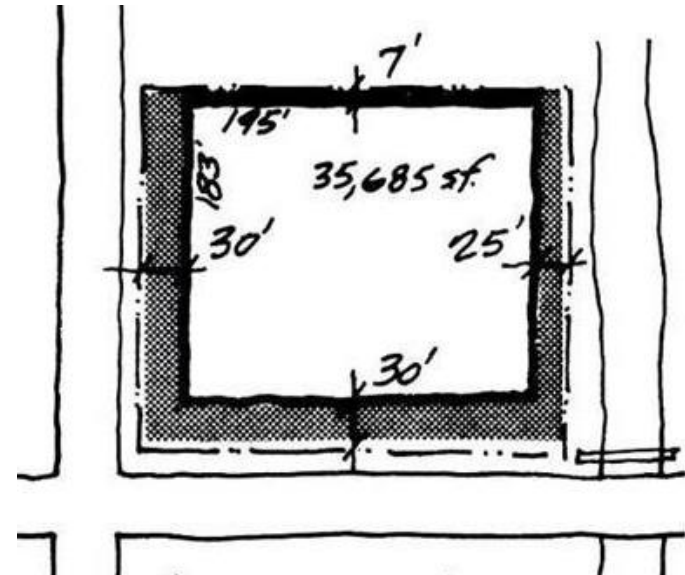
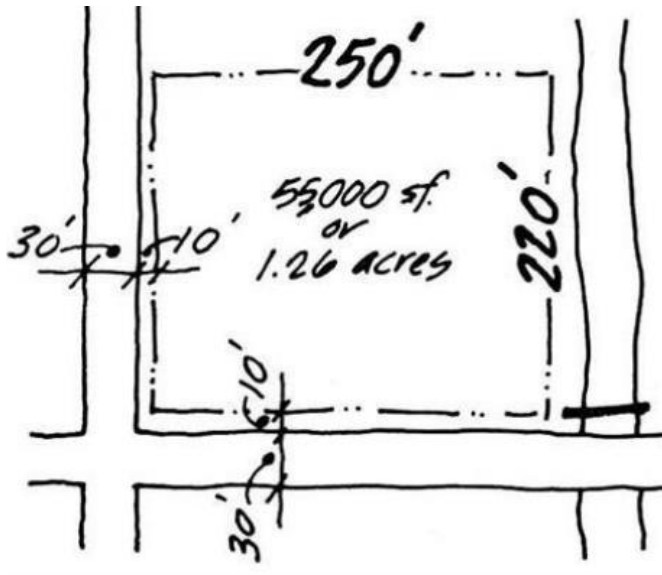


CONTEXT

KINDS OF INFORMATION

3. SIZE & AREA

Documents all the dimensional aspects of the site including boundaries, location and dimensions of present zoning.

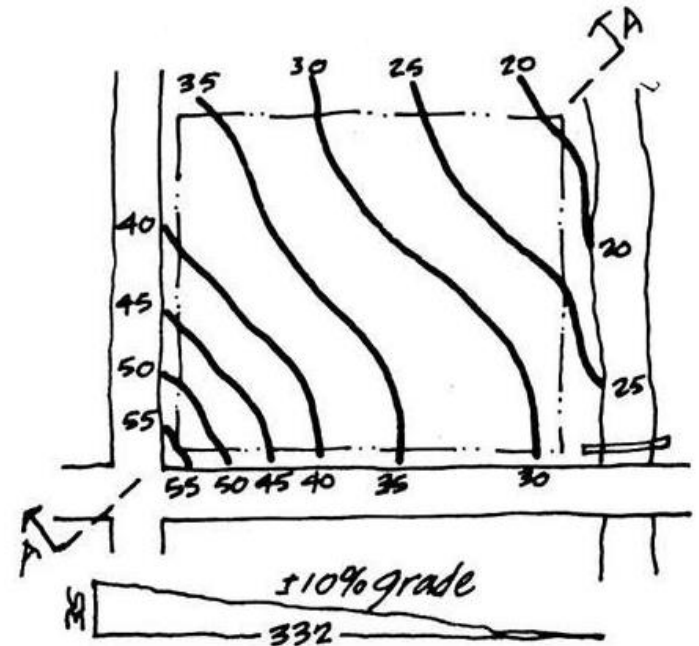
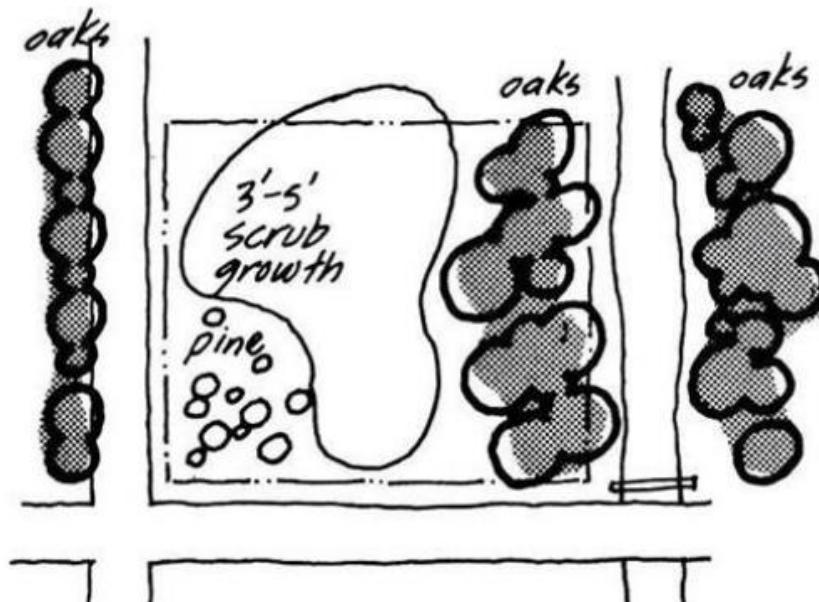


CONTEXT

KINDS OF INFORMATION

4. NATURAL PHYSICAL FEATURES

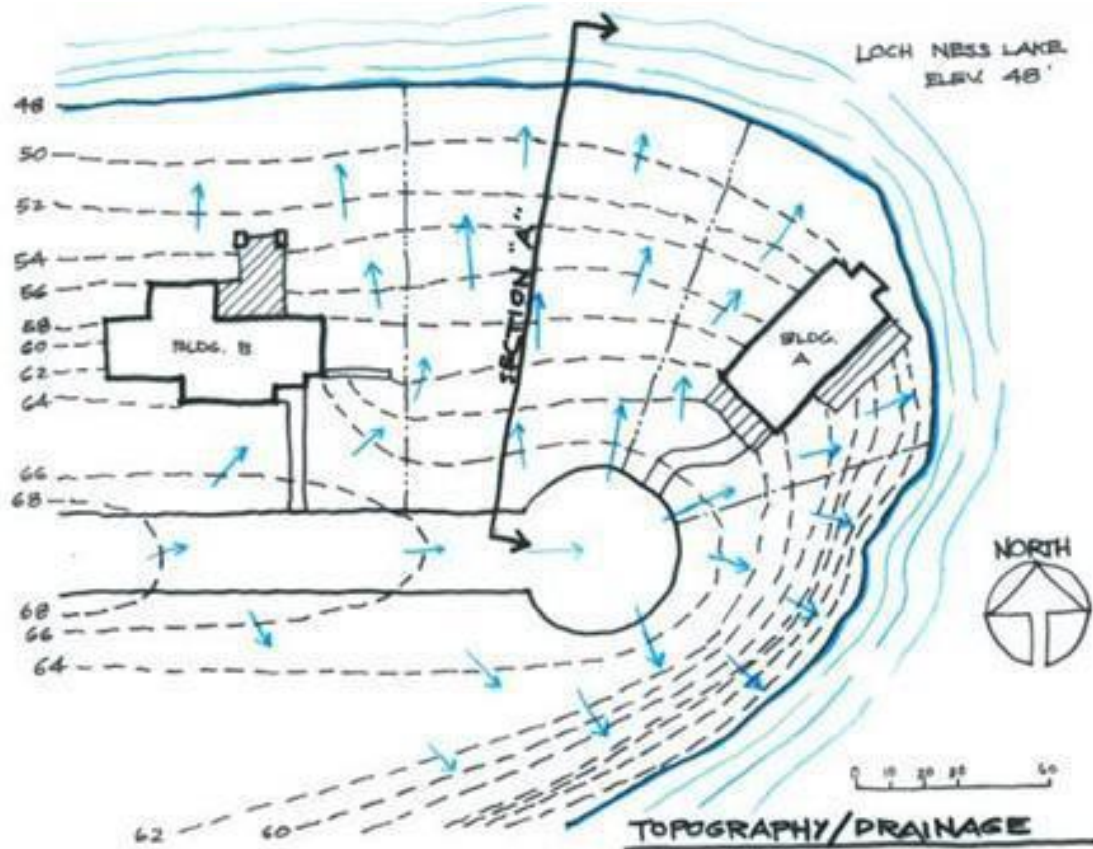
Includes contours, trees, rocks,...



CONTEXT

KINDS OF INFORMATION

4. NATURAL PHYSICAL FEATURES



CONTEXT

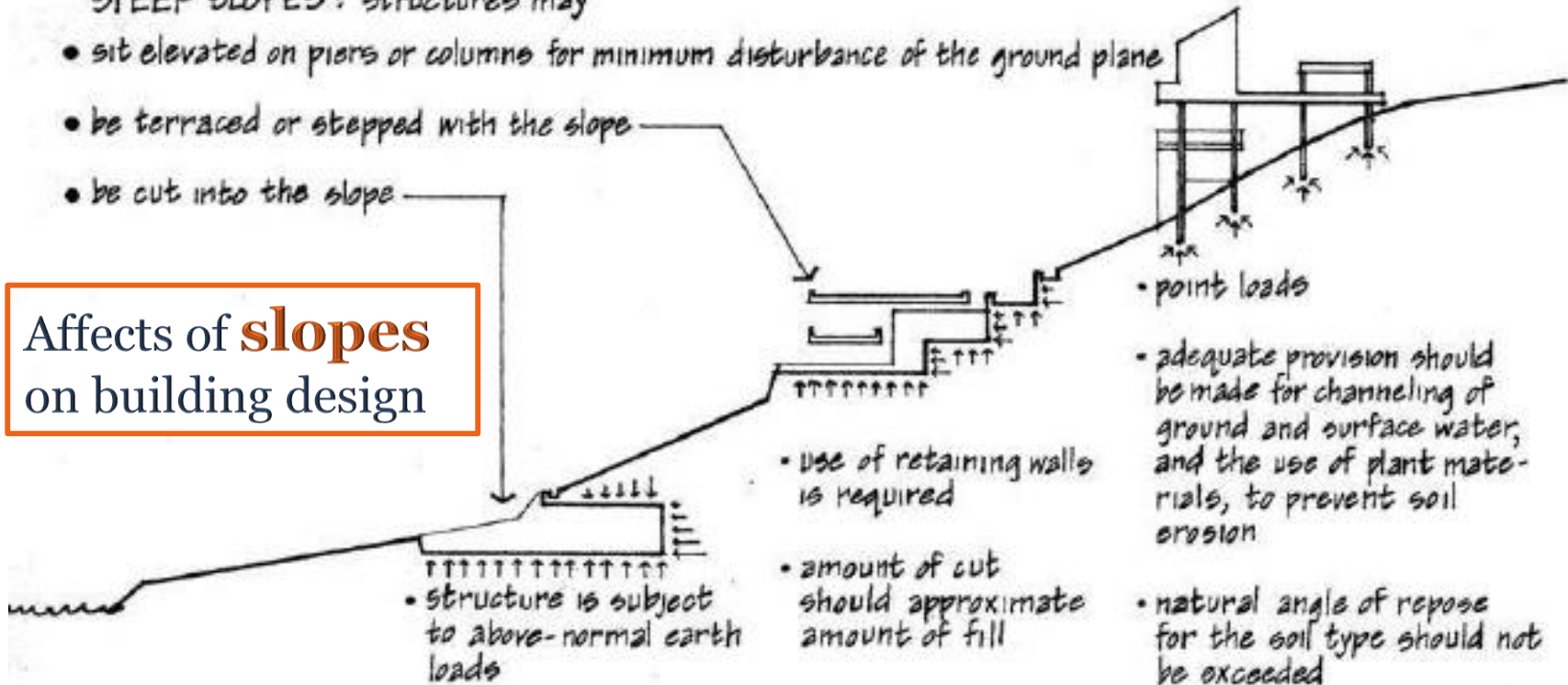
KINDS OF INFORMATION

4. NATURAL PHYSICAL FEATURES

STEEP SLOPES: structures may

- sit elevated on piers or columns for minimum disturbance of the ground plane
- be terraced or stepped with the slope
- be cut into the slope

Affects of **slopes**
on building design

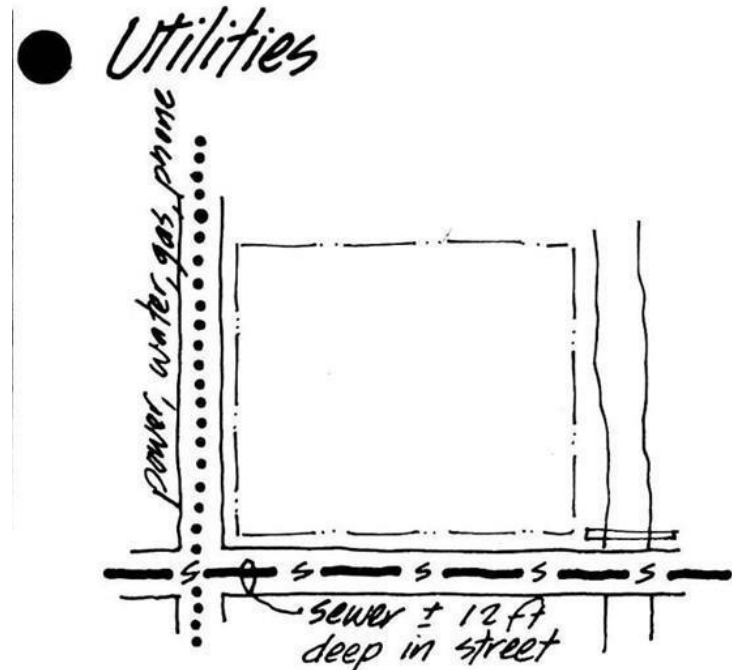
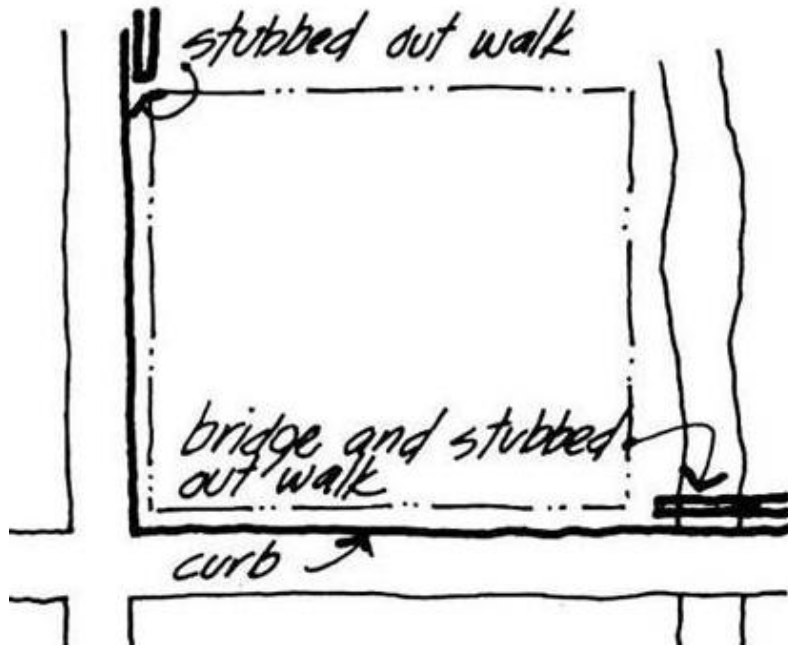


CONTEXT

KINDS OF INFORMATION

5. MAN MADE FEATURES

Documents on site conditions such as buildings, walls, paving patterns,...

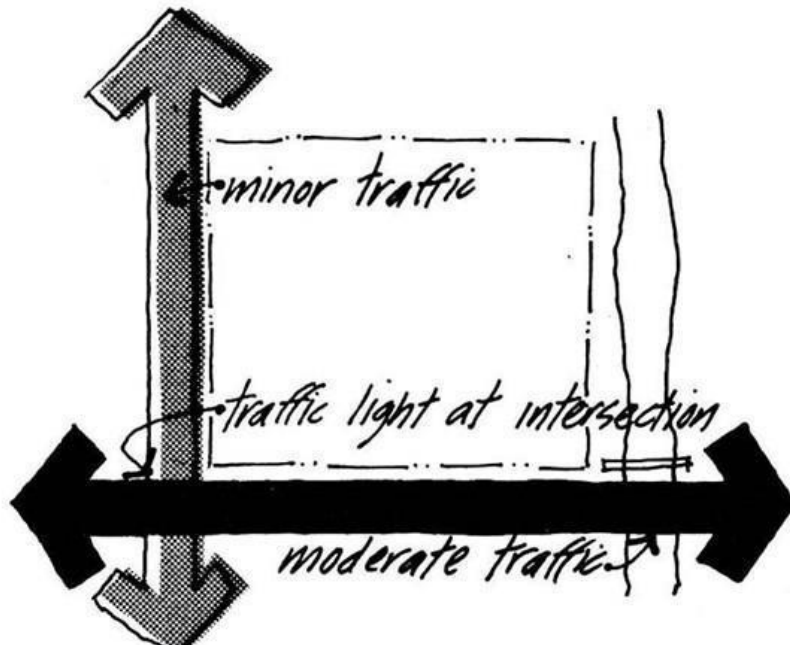


CONTEXT

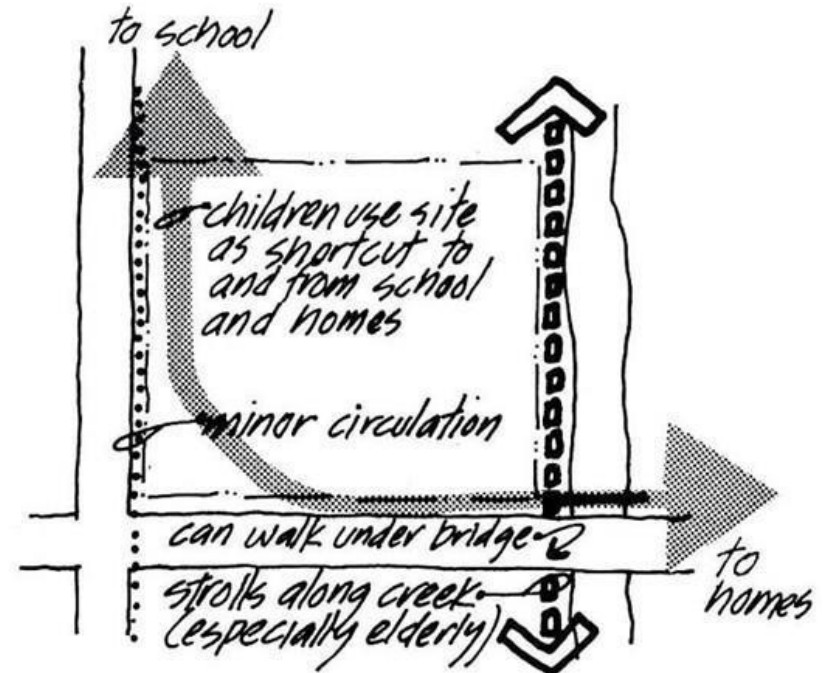
KINDS OF INFORMATION

6. CIRCULATION

● Vehicular circulation



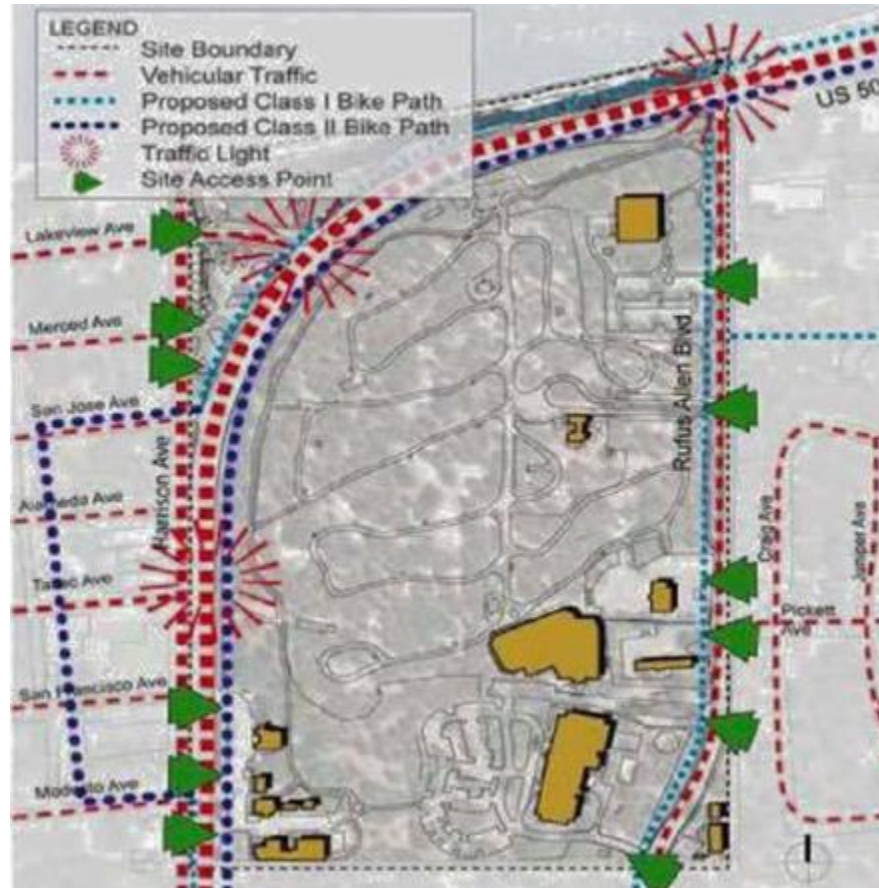
● Pedestrian circulation



CONTEXT

KINDS OF INFORMATION

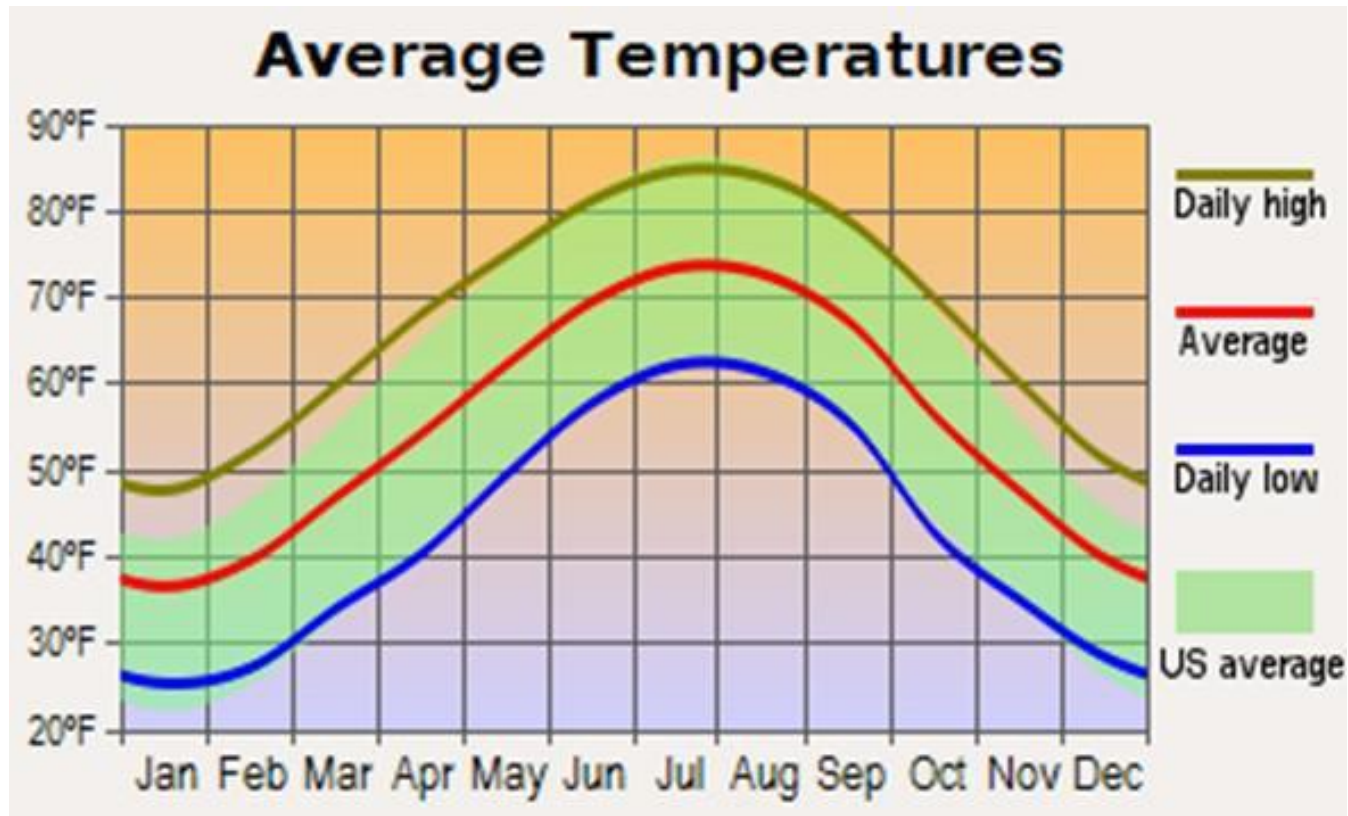
6. CIRCULATION



CONTEXT

KINDS OF INFORMATION

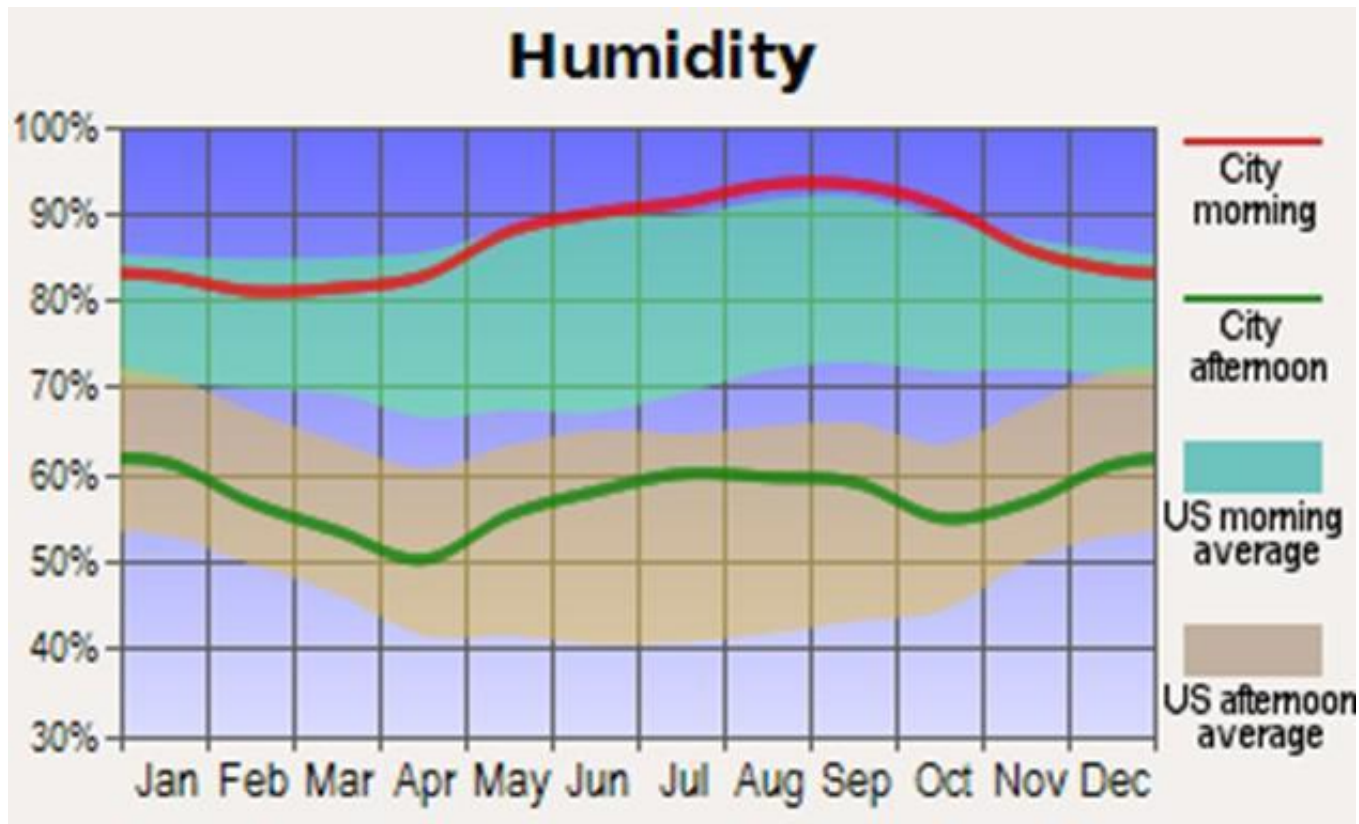
7. CLIMATE



CONTEXT

KINDS OF INFORMATION

7. CLIMATE

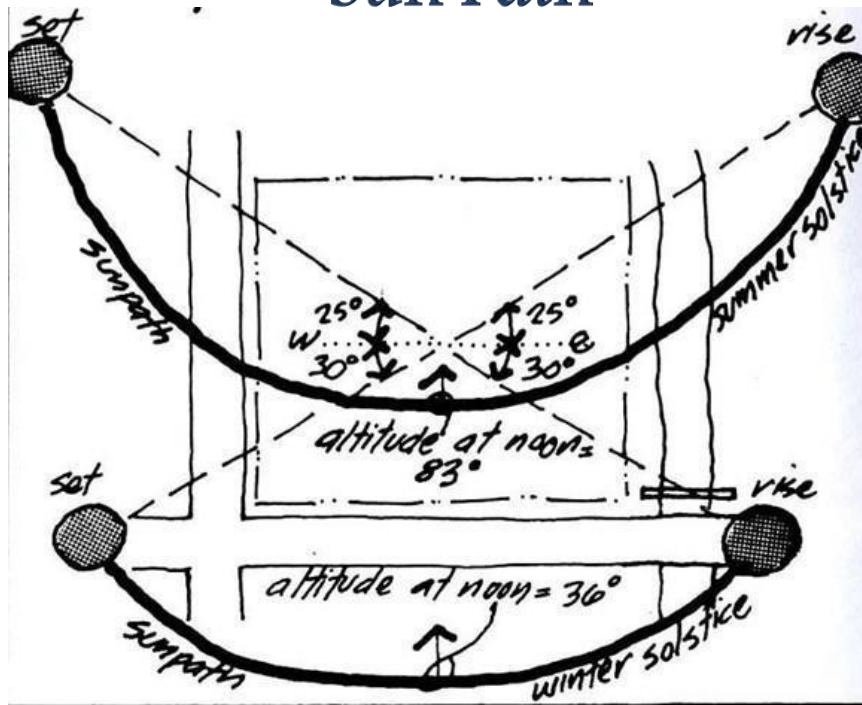


CONTEXT

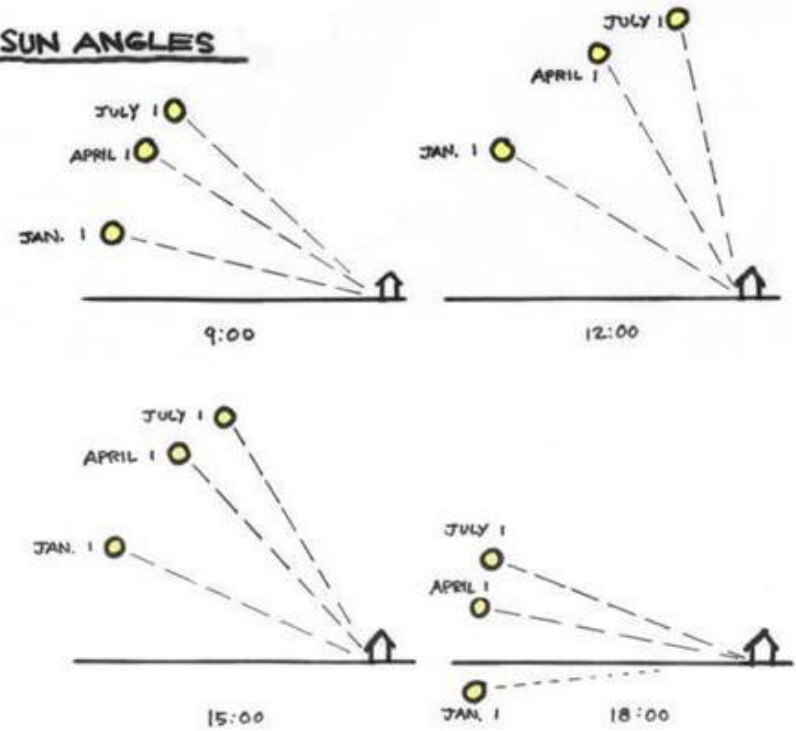
KINDS OF INFORMATION

7. CLIMATE

Sun Path



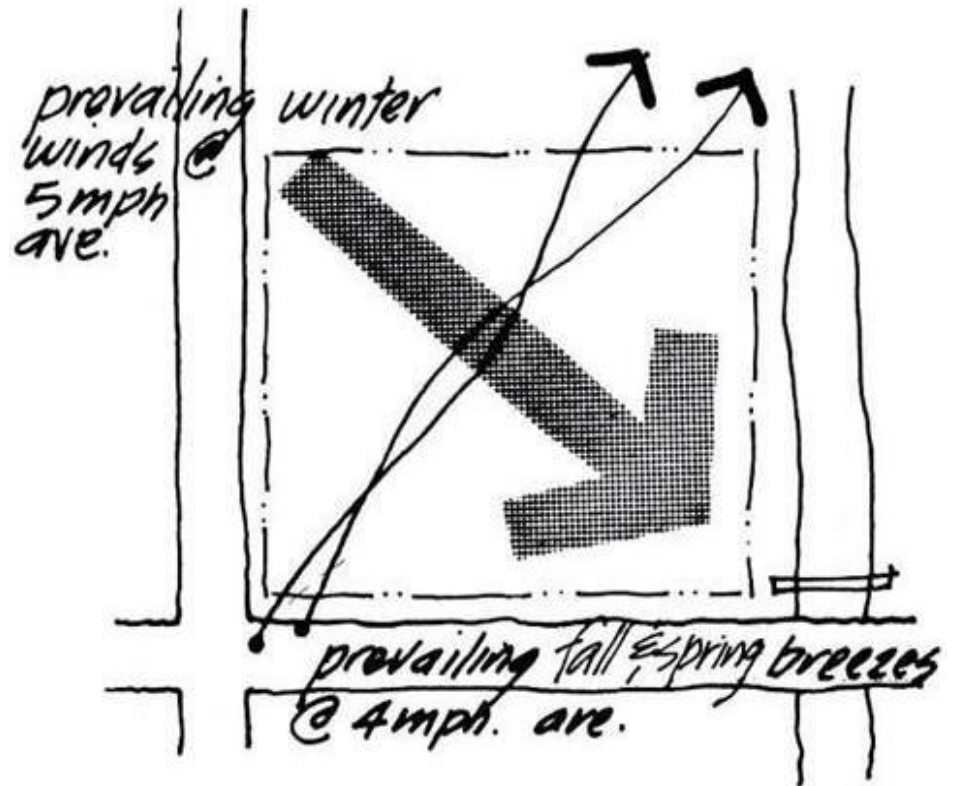
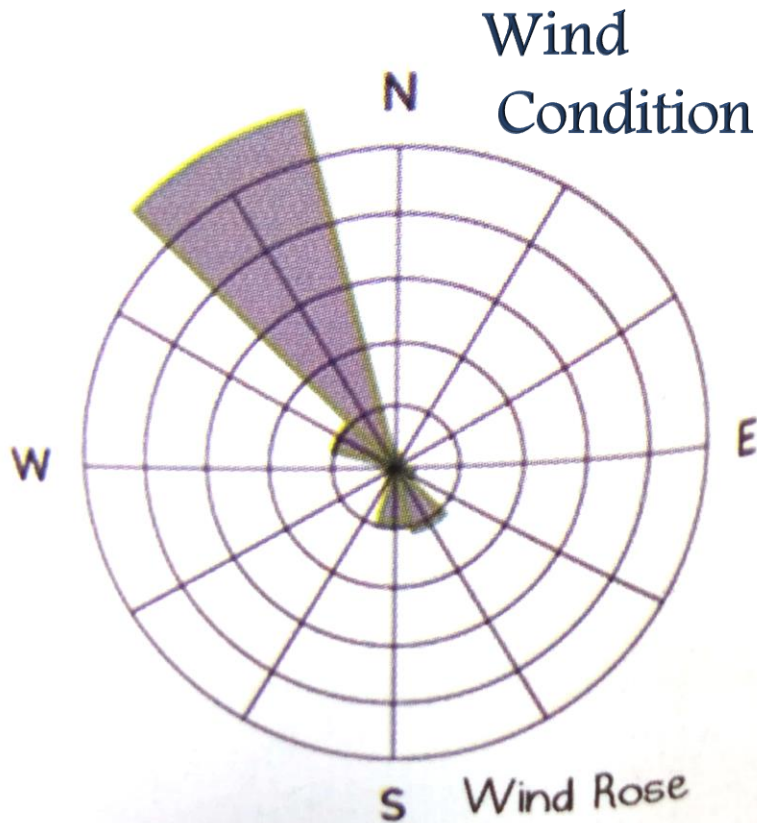
SUN ANGLES



CONTEXT

KINDS OF INFORMATION

7. CLIMATE

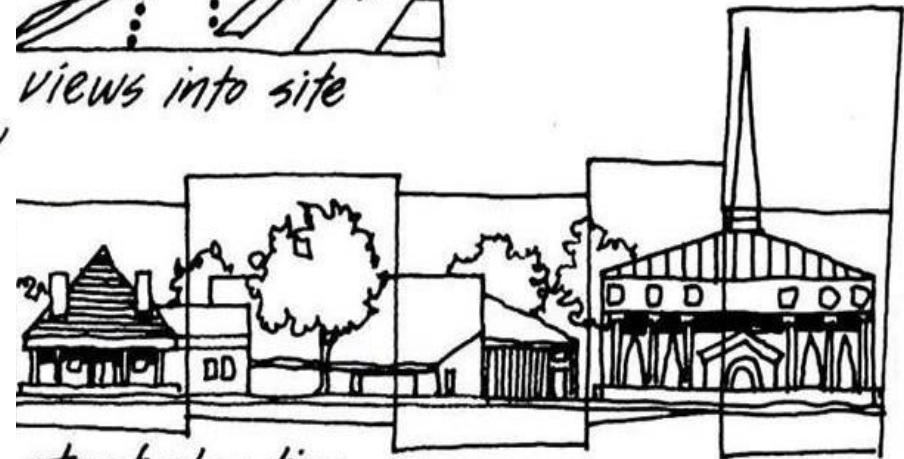
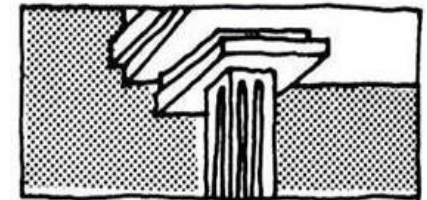
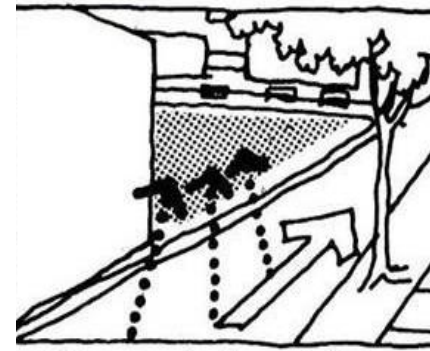
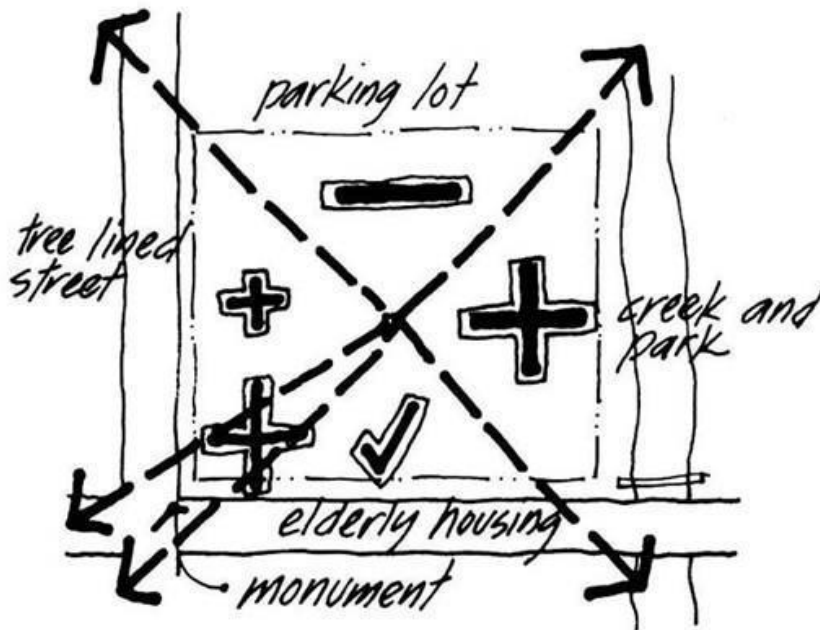


CONTEXT

KINDS OF INFORMATION

8. DIFFERENT VIEWS

● Views from site

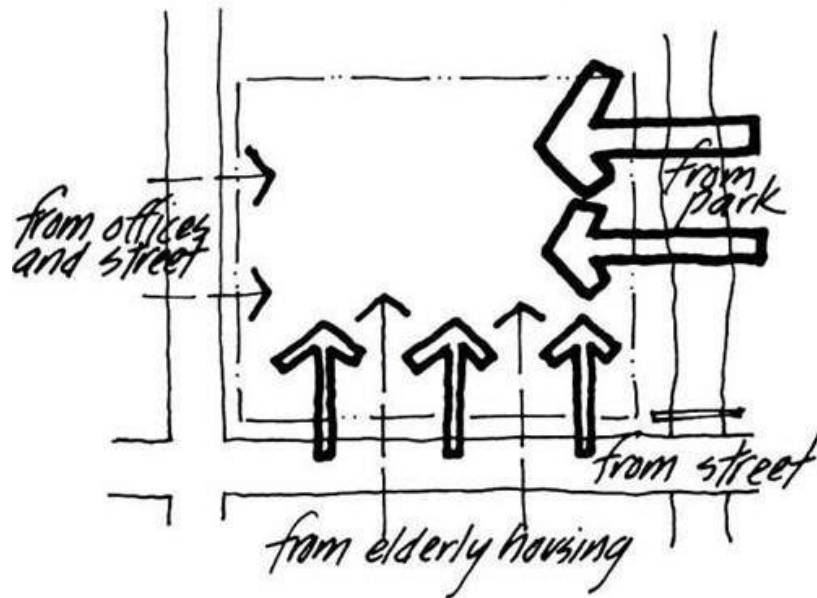


CONTEXT

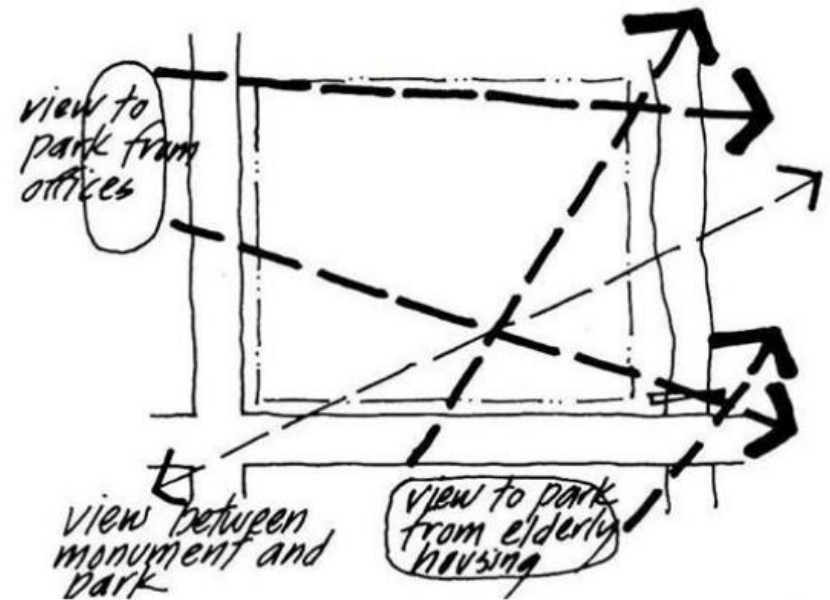
KINDS OF INFORMATION

8. DIFFERENT VIEWS

● Views to site



● Views through site

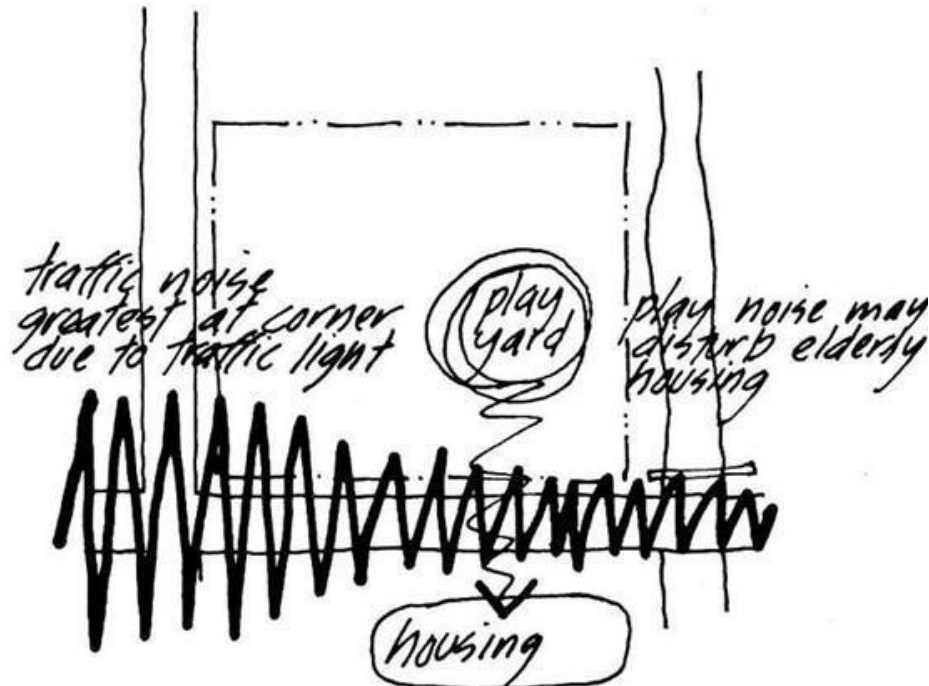


CONTEXT

KINDS OF INFORMATION

9. NOISE

● Noise



3

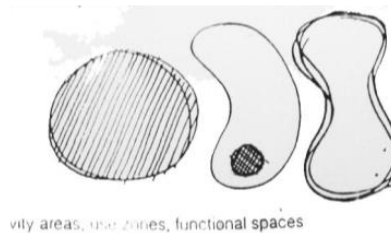


SYMBOLIZING SKETCH ELEMENTS

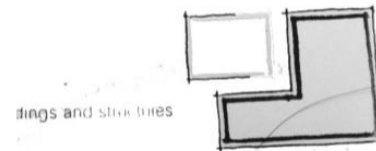
SYMBOLIZING SKETCH ELEMENTS

FUNCTIONAL ELEMENTS SYMBOLIZING

FUNCTIONAL SPACES



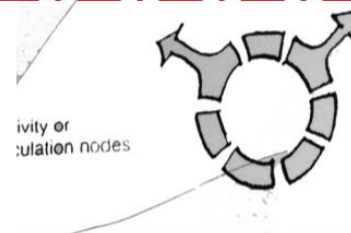
BUILDINGS AND STRUCTURES



FOCAL ELEMENTS



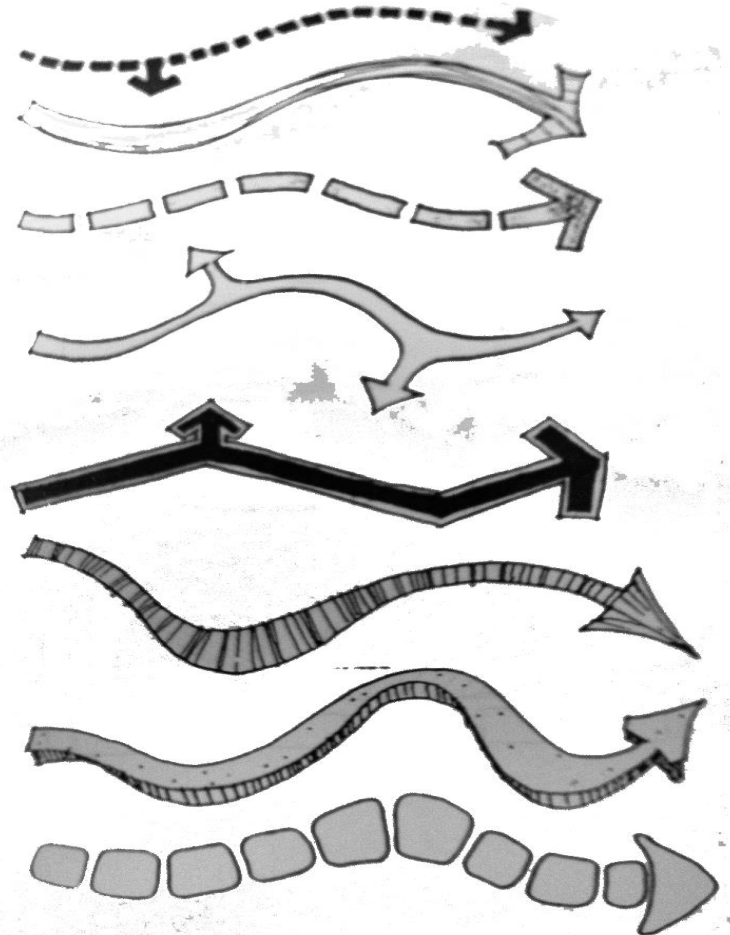
ACTIVITY/CIRCULATION NODE



SYMBOLIZING SKETCH ELEMENTS

MOVEMENTS SYMBOLIZING

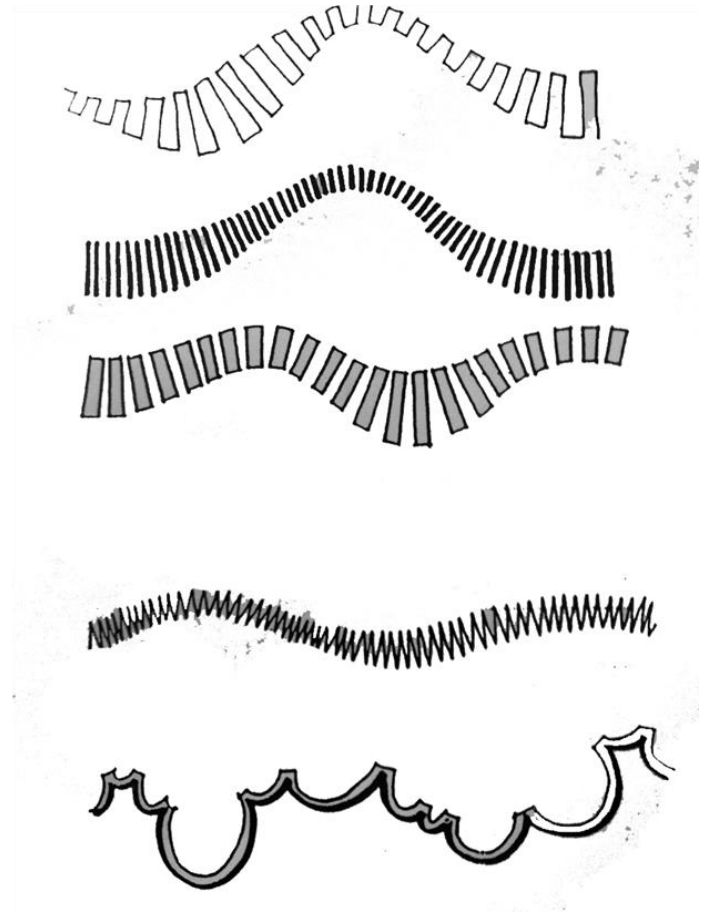
Simple arrows can designate corridors and other directional movements.



SYMBOLIZING SKETCH ELEMENTS

EDGES SYMBOLIZING

Articulating lines can show lineal vertical elements such as walls, screens, barriers,...

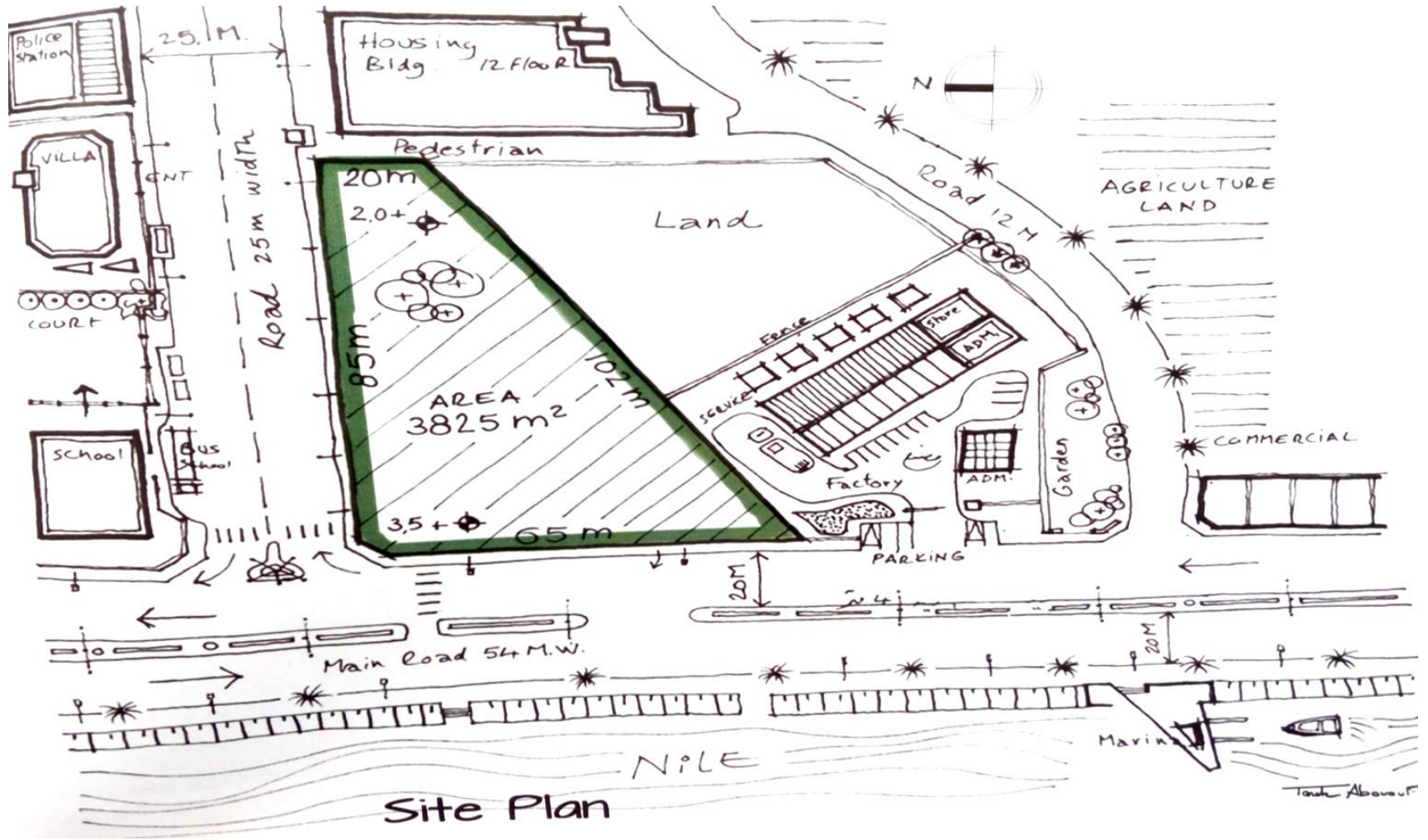


4

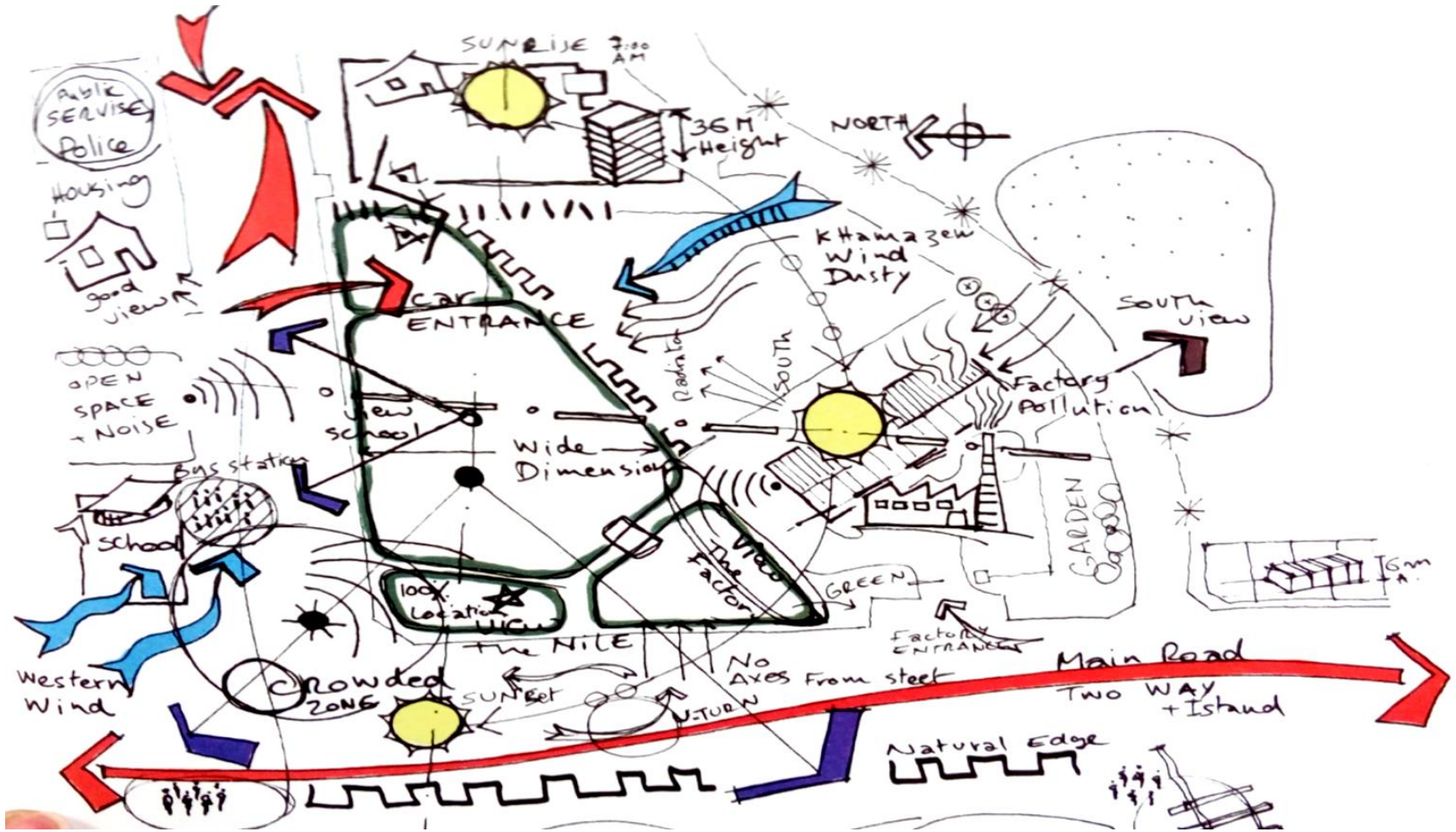


EXAMPLES

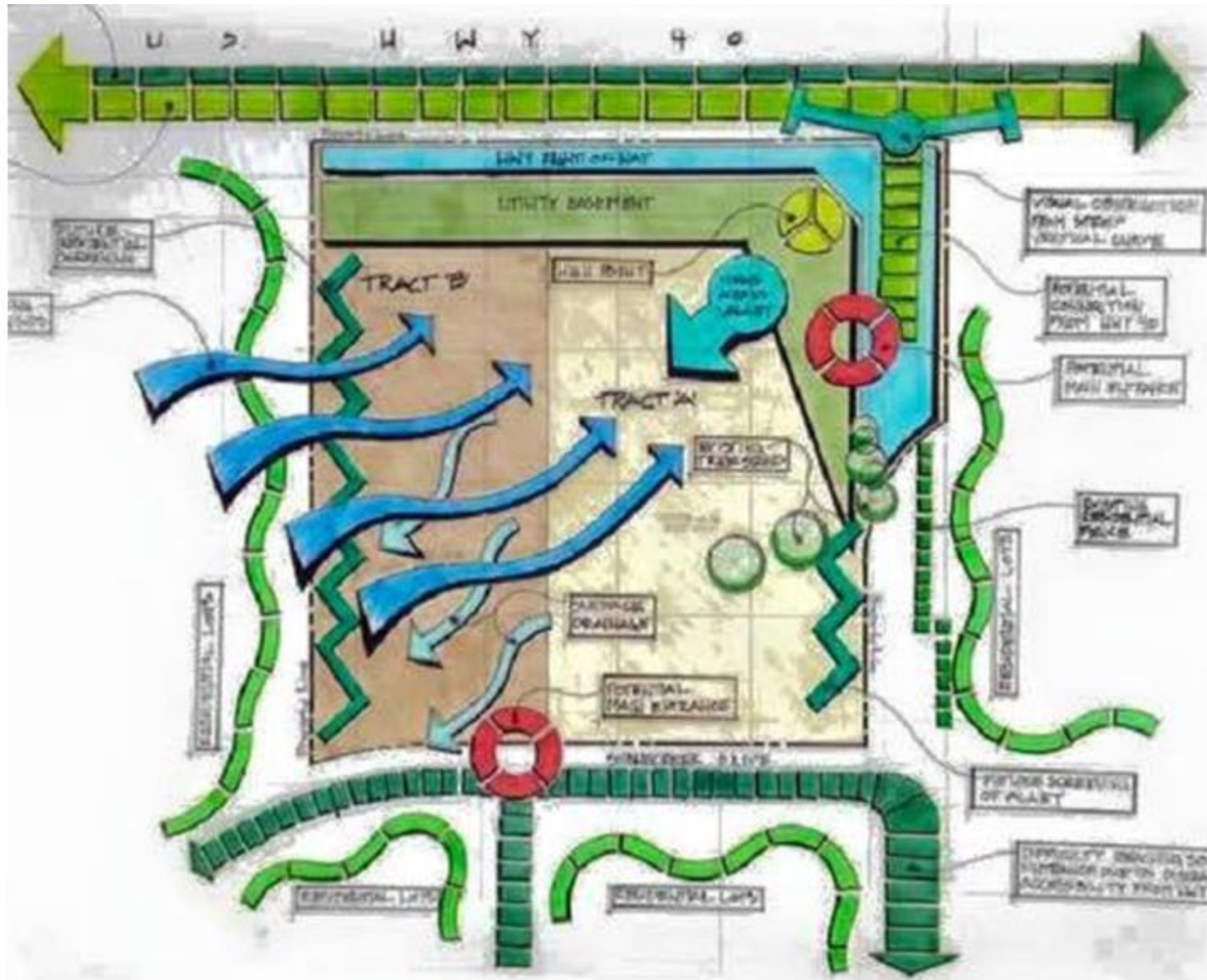
EXAMPLES



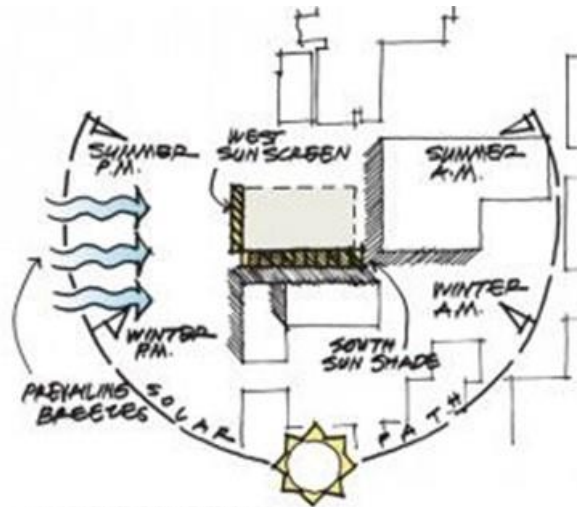
EXAMPLES



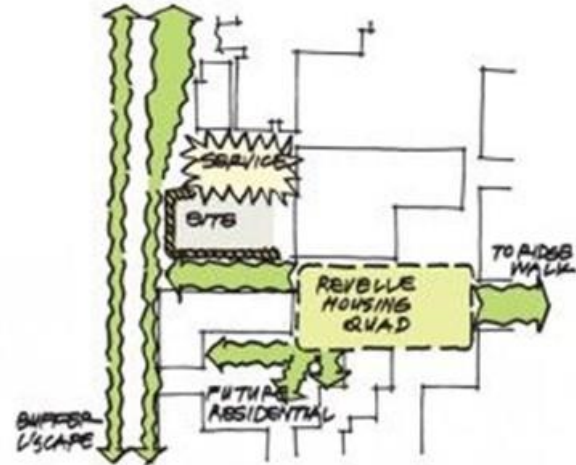
EXAMPLES



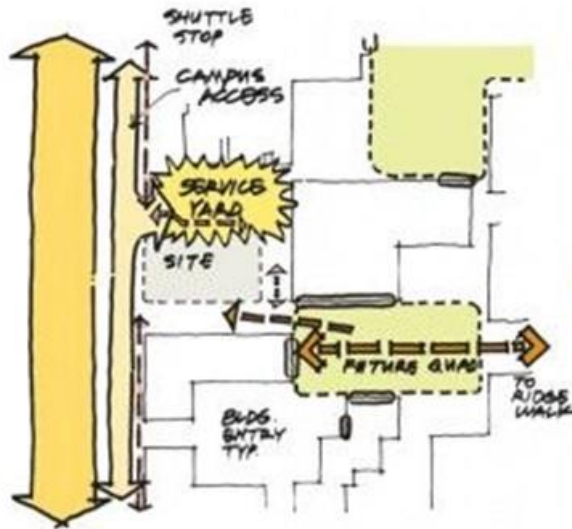
EXAMPLES



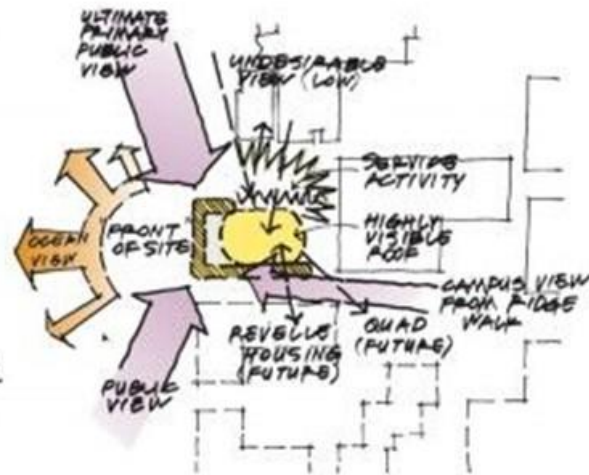
AMBIENT CONDITIONS



OPEN SPACE

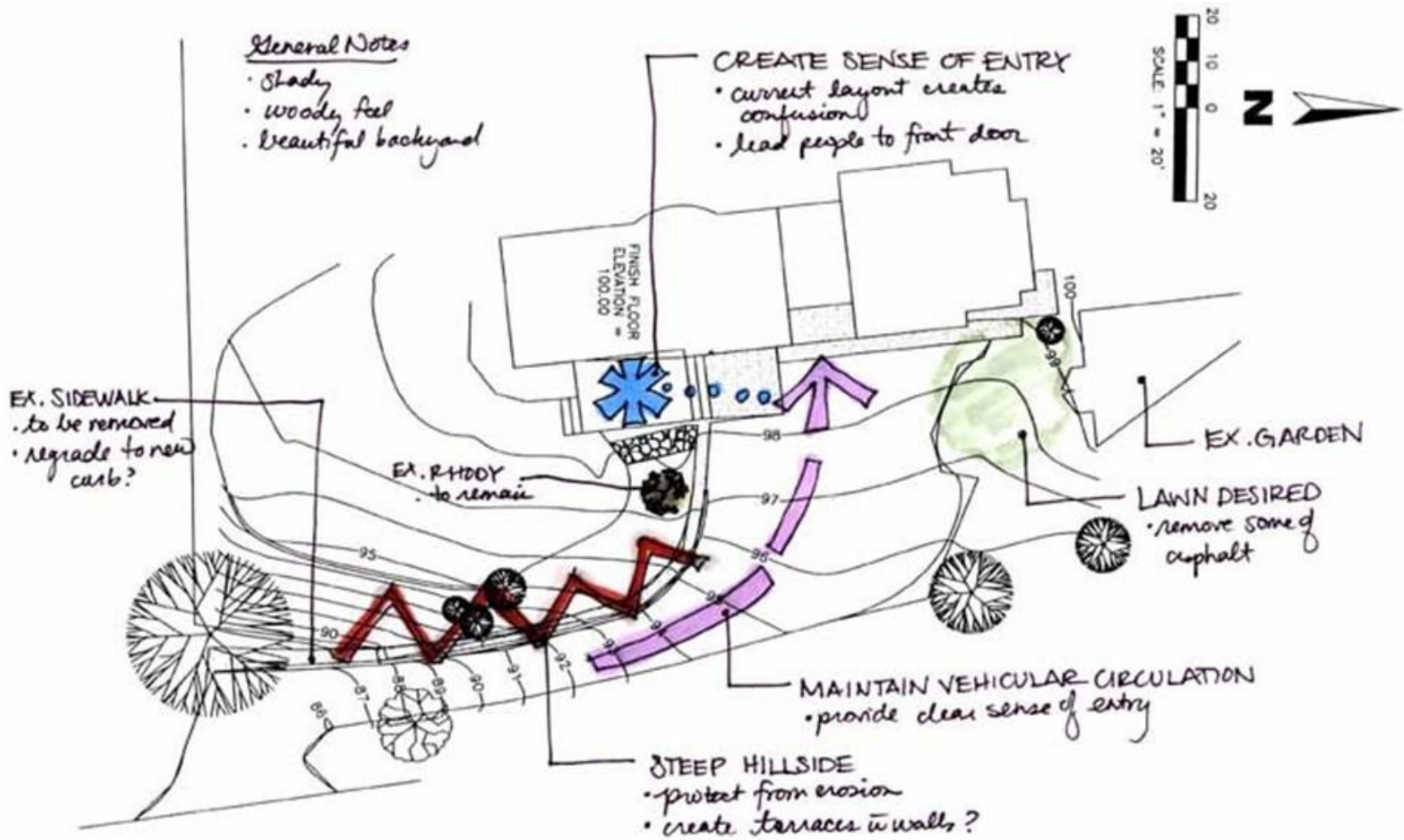


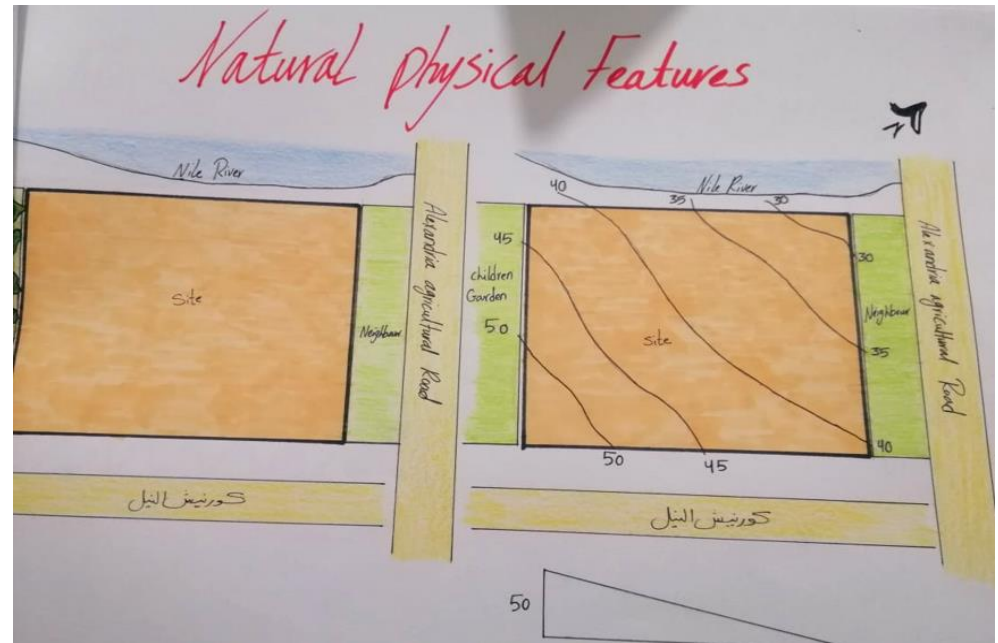
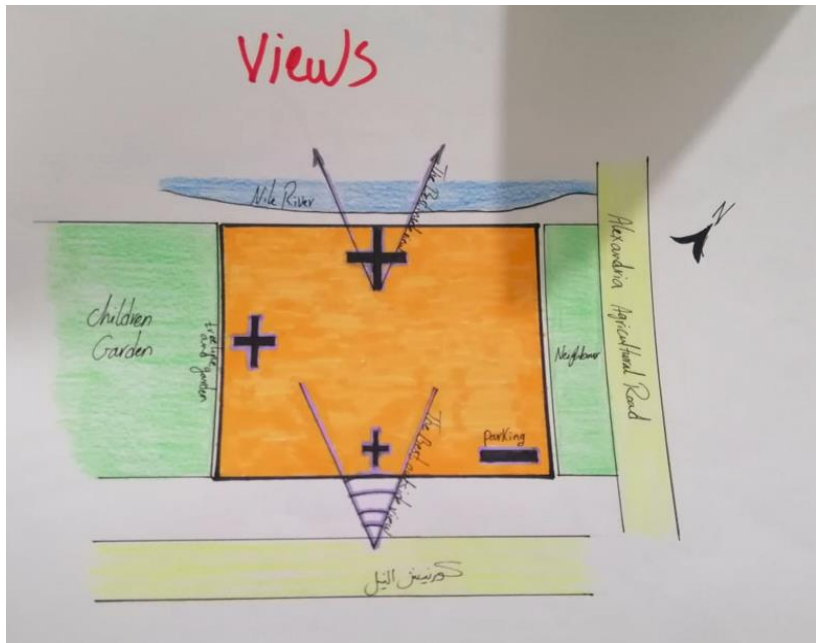
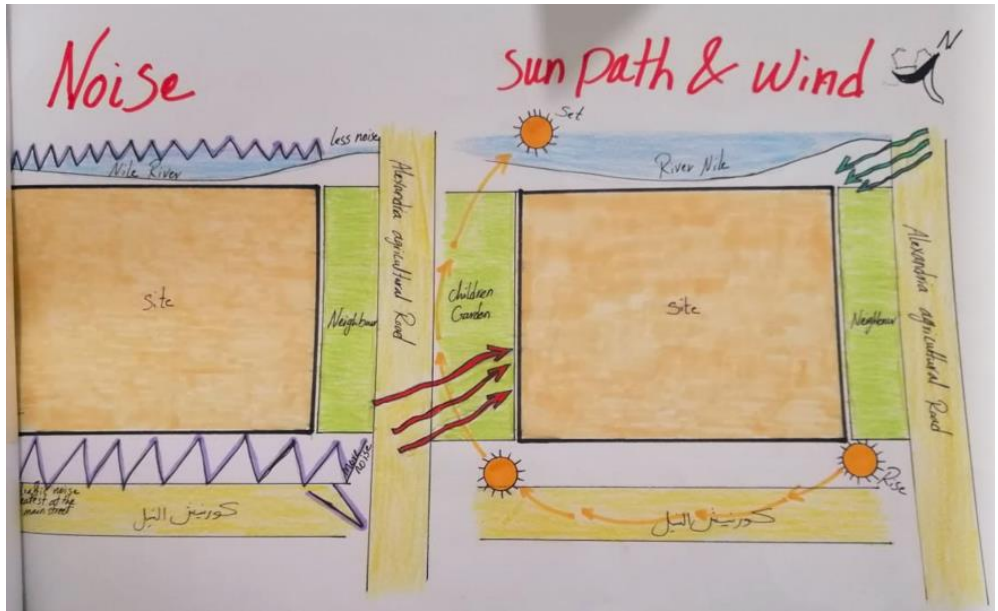
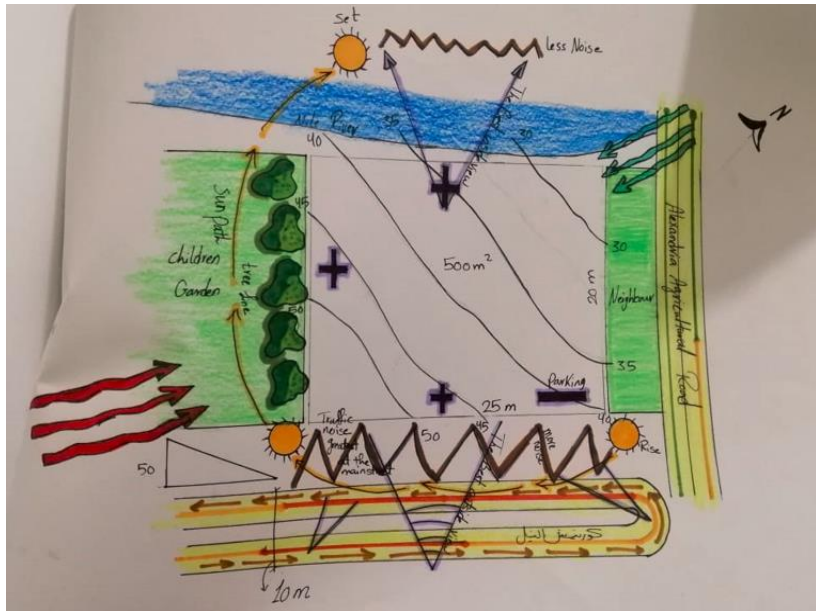
PEDESTRIAN & VEHICULAR CIRCULATION

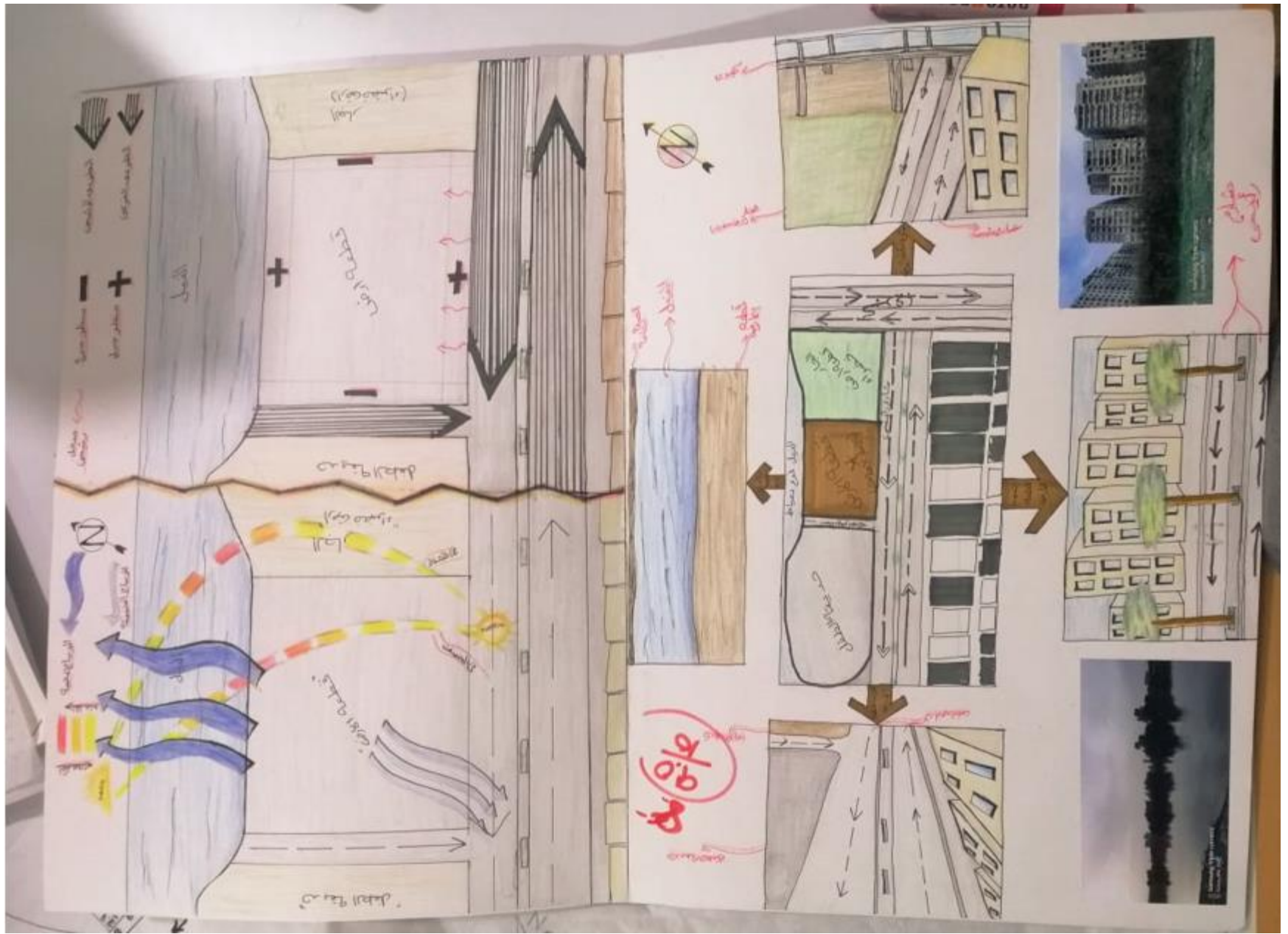


VIEWS

EXAMPLES







5



HOMework #6

HOMEWORK #6

على كل طالب عمل تحليل للموقع الخاص بموقع المشروع بناءا على ما تم شرحه
بالمحاضرة

REFERENCES

The references to multiple sources are text & figures
(sketches, drawings, pictures, photos,..etc.)

**ALL THE RIGHTS BELONG TO ORIGINAL
AUTHORS**

ANY QUESTIONS???

THANK YOU...